

AXM BLUETOOTH MESH MODULE INSTALLATION GUIDE

X-BLE v5.2 X-BLE v5.2



P. 1300 818 884

E. smartobm@airtecaustralia.com.au

www.smartobm.com

INSTALLATION GUIDE

The AXM Bluetooth Mesh Module is a quick upgrade solution to vastly improve the Bluetooth connectivity of your AXM scales. This provides a faster and more seamless connection between your Airtec Scales, and enables compatibility with the new AXS Series Scales.

STEP 1

Disconnect AXM from power source.

STEP 2

Open the lid of the AXM by unlatching the plastic tabs.

STEP 3

Unscrew the 4 screws holding the lid in place with a phillips head screwdriver.

STEP 4

Locate the DIGI Xbee chip on the board.

STEP 5

Remove the Xbee chip from the board by pulling upwards. It should be secured with silicone so there will be some resistance.

STEP 6

Take your new Bluetooth Mesh chip and replace the Xbee chip ensuring all pins are aligned properly in their slots.

STEP 7

Carefully apply a generous amount of silicone to the gap between the chip and the pin header of the board on both sides.

STEP 8

Align the lid and screw the lid back on.

STEP 9

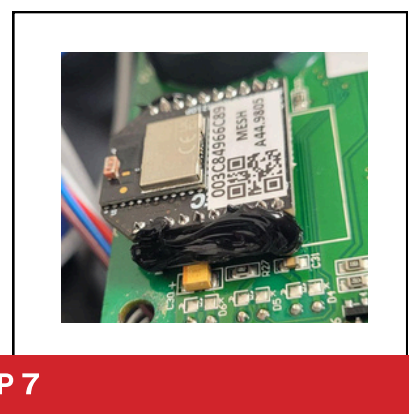
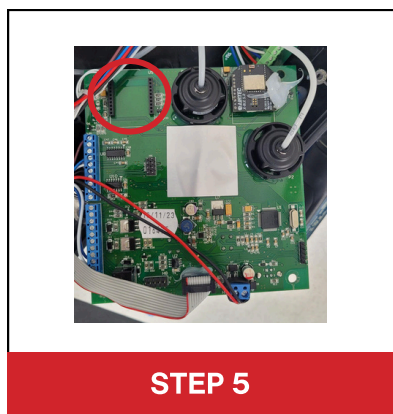
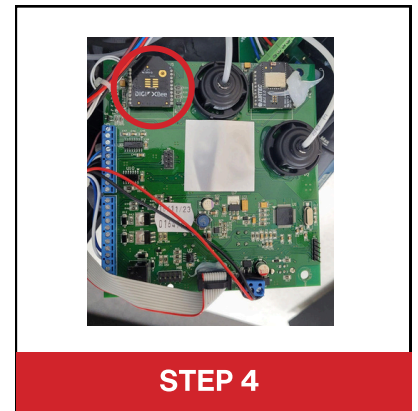
Apply the serial number sticker under the display.

NEED HELP? CONTACT US:

P. 1300 818 884

E. smartobm@airtecaustralia.com.au

www.smartobm.com



AXL BLUETOOTH MESH MODULE INSTALLATION GUIDE

| **AXL-BTM5-DBK2**



P. 1300 818 884

E. smartobm@airtecaustralia.com.au

www.smartobm.com

INSTALLATION GUIDE

The AXL Bluetooth Mesh Module is a quick upgrade solution to vastly improve the Bluetooth connectivity of your AXL scales. This provides a faster and more seamless connection between your Airtec Scales, and enables compatibility with the new AXS Series Scales.

STEP 1

Disconnect AXL from power source.

STEP 2

Open the clear plastic lid of the AXL scale by unlatching the plastic tabs.

STEP 3

Unscrew the 4 front plate screws with a phillips head screwdriver and fold down to view circuit board.

STEP 4

Remove the two screws from the green PCB.

STEP 5

Attach the Bluetooth Mesh Module to the 6-pin connector on the right using a 100mm cable tie.

STEP 6

Secure the white piezo cable to the PCB using a 100mm cable tie.

STEP 7

Place M5 x 12mm spacers under the module and secure with M4 x 20mm screws.

STEP 8

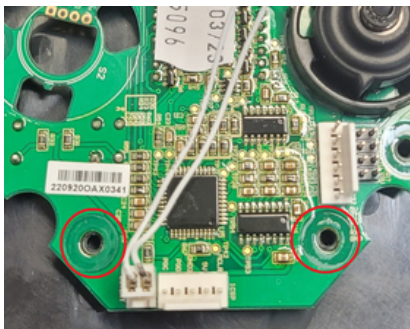
Tighten the zip tie and trim the excess.

STEP 9

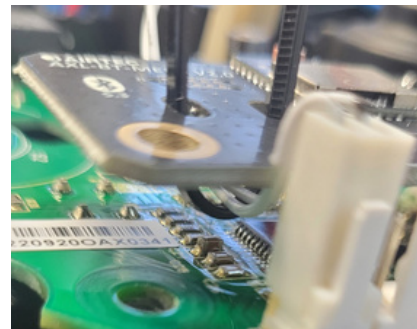
Align the lid and screw it back on.

STEP 10

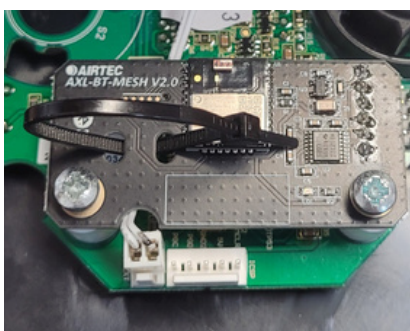
Apply the serial number sticker under the display.



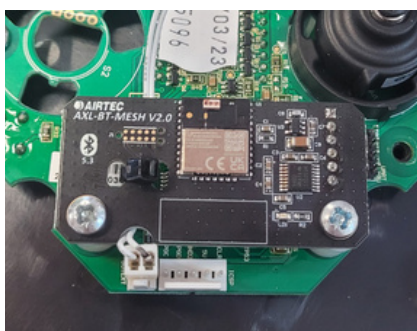
STEP 4



STEP 6



STEP 7



STEP 8



STEP 9



STEP 10



NEED HELP? CONTACT US:

P. 1300 818 884

E. smartobm@airtecaustralia.com.au

www.smartobm.com