

AXR-2000

In-Cab LCD Display

SMARTOBM
AIRTEC

The AXR In-Cab LCD Display wirelessly pairs with AXM or AXS Truck Scales to show real-time axle group weights. It supports simultaneous display of up to three axle groups along with the Gross Combination Mass (GCM).

Designed to fit a standard 52mm gauge hole or cup, the AXR offers seamless installation.

Packed with advanced Bluetooth® technology, this next-generation in-cab display delivers instant access to weight data, offering faster, clearer, and more efficient monitoring from a single screen.

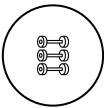


Features



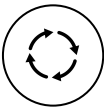
Compact Design

Mounting
Engineered to fit neatly into a 52mm gauge hole cup for easy integration.



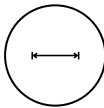
Multi-Group Display

View all three axle groups and Gross Combination Mass (GCM) at a glance.



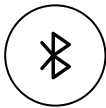
Rotary & Push Control

Control
User-friendly interface for quick navigation and precision input.



1.3' Colour LCD

Bright,
high-resolution display designed for clear visibility in all lighting conditions.



Bluetooth® 5.4

Effortlessly pairs with AXS and AXM Series Scales for real-time data transmission.

Optional Item



AMK-5306

Gauge Bracket Kit

The AXR-2000 Gauge Bracket Kit allows for quick and easy installation to any vehicle dashboard, ensuring a secure and streamlined fit.

Technical Data

AXR-2000



Electrical

Input Voltage	7-32 VDC
Power	Typical Average 80 mA @ 12 VDC
Protection	Reverse and Over Voltage
Connections	4 Wire Blunt Cut 1.5m cable (7-32 VDC - Brown, Ground - Black)

Environmental

Operating Temperature	-40°C to +85 °C
Dust and Water Ingress	IP4X

Communication

Wireless	Bluetooth® 5.4
Wired	RS-232

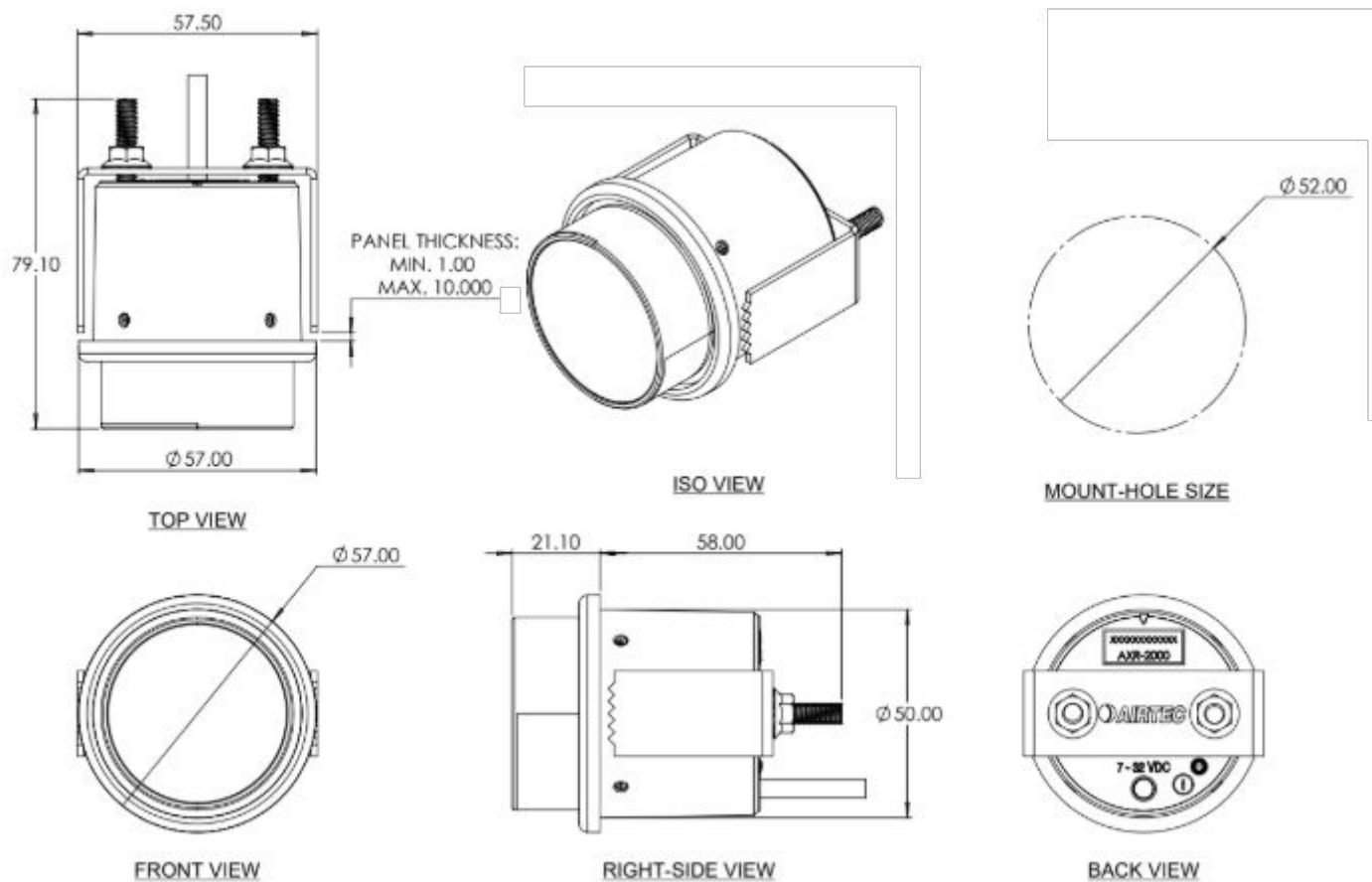
Technical Data

AXR-2000



Communication

Display	1.3" Liquid Crystal Display RGB LED Light Ring Rotate and Press Dial
Dimensions	56(W) x 56(H) x 60(D) mm 56(W) x 56(H) x 80(D) mm (Including mounting screws)
Material	ASA Plastic

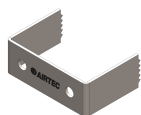


Technical Data

AXR-2000



Included Parts



A53.0013 AXR-2000 Retaining Bracket



A51.N007 M5 SS hex flange serrated nut

Warranty

Manufacturer's Warranty

For warranty information please visit our website
www.smartobm.com

Certifications



RCM